

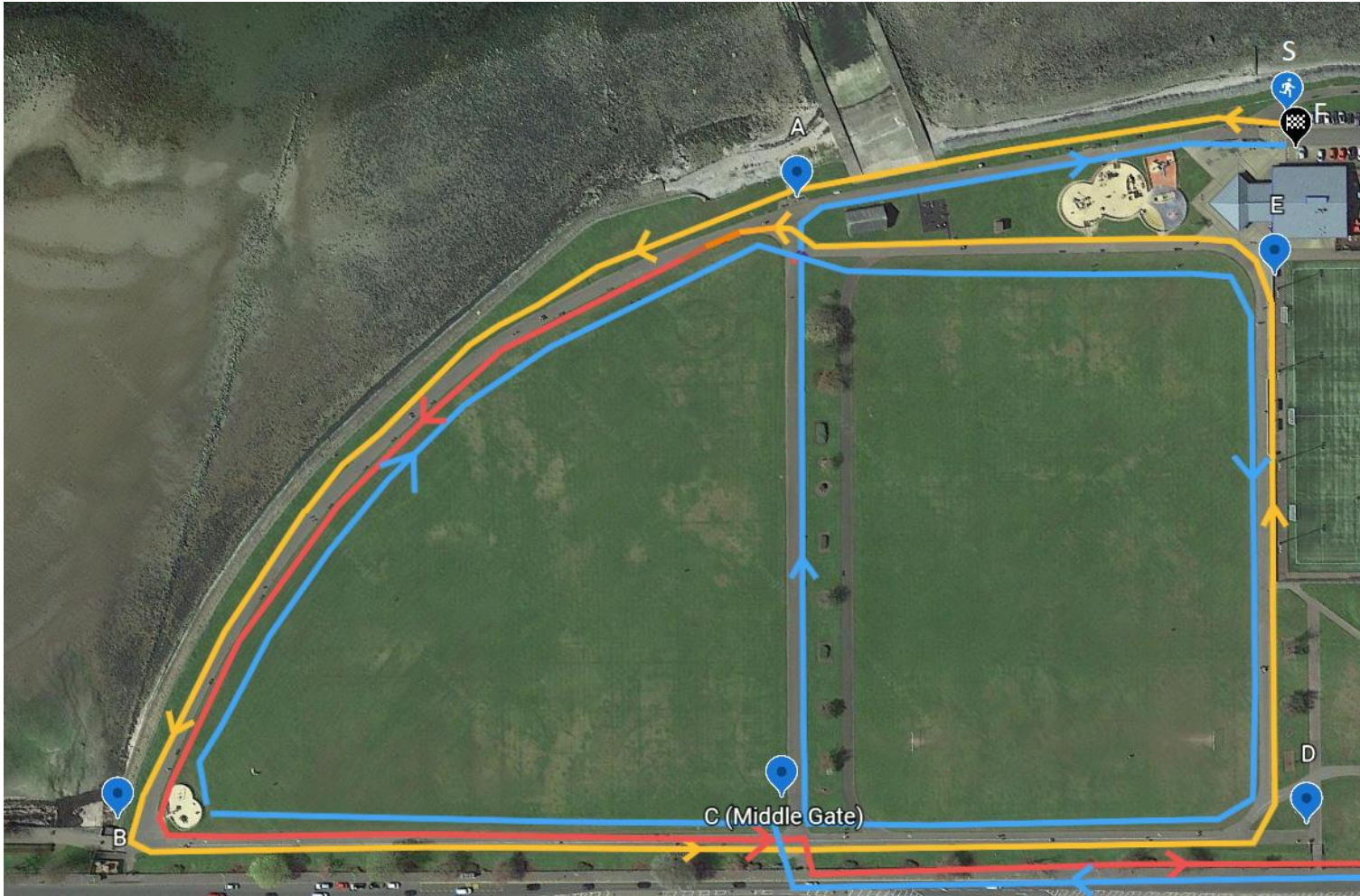


Map 1 Event Overview Map



Map 2 - U20 / SEN Full Map.

S-A-B-C-D-E-A-B-C-X-C-B-A-E-D-C-A-F



Map 3 - U20 / SEN Battery Park Section.

Outwards Battery Park section = 1 +1/2 laps. S-A-B-C-D-E-A-B-C (leaving park). 180degrees turn at point X (see map 2)

Return Battery Park section = 1 lap + short section to finish. C-B-A-E-D-C-A-F



Map 4 - U11 1.6km extended loop of Battery Park



Map 5 – U13 & U15 = 3k Course. U17 = 4k Course

3k:	Start to A	0.156k	4k:	Start to A	0.149k
	2 x ABCDA	1.007k= 2.014k		3 x ABCDA	1.007k= 3.021k
	1 x ABC Finish	<u>0.830k</u>		1 x ABC Finish	<u>0.830k</u>
		<u>3.000k</u>			<u>4.000k</u>